



## Empowering Mindanao



**steag**

**STEAG state  
power inc.**

### *Providing safe and reliable supply of electricity ...*

The 210MW (net) Mindanao Coal-Fired Power Plant on the shores of Macajalar Bay in Villanueva, Misamis Oriental is established to bring more electrical power essential to sustain Mindanao's growth and development.

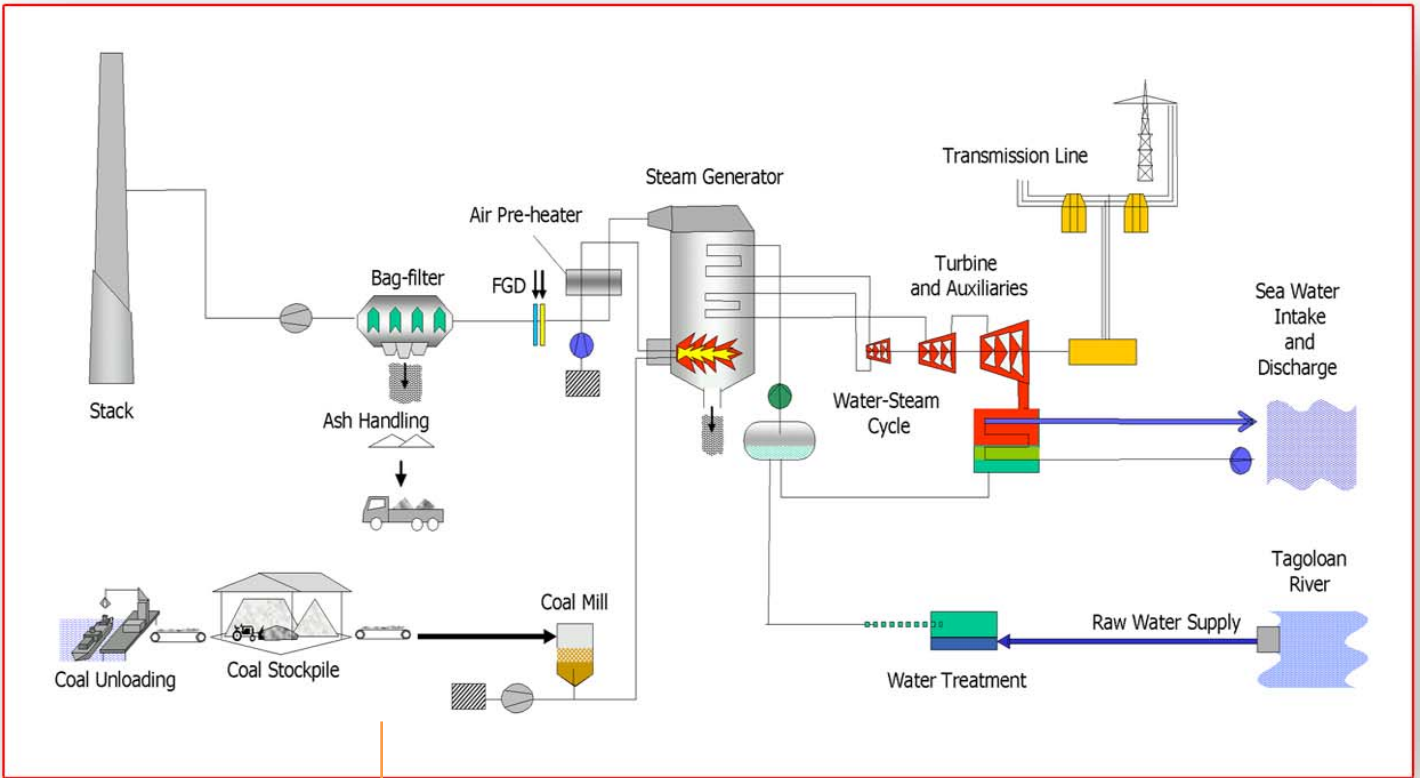
### *With the commitment to promote the economic and health condition of the people....*

In partnership with government and other organizations, STEAG State Power Inc. implements a comprehensive social development programs benefiting residents from its host communities.

### *And help attain sustainable development....*

STEAG State Power Inc. takes cognizance of its moral obligation to the environment by ensuring the power plant's environmental-compatibility through the use of modern technologies in the process of power generation as well as by undertaking comprehensive community-based environmental programs such as reforestation and marine resource conservation.

## Simplified Process Diagram



### STEAG State Power Inc.

#### Head Office

20th Flr. Yuchengco Tower, RCBC Plaza  
6819 Ayala Avenue, Makati City 1220  
Philippines

Tel. : +63(02) 845-1473  
Fax : +63(02) 845-3396

### STEAG State Power Inc.

#### Plant Office

Balacanas, Villanueva, Misamis Oriental 9002  
Philippines

Tel. : +63(088) 567-0376  
Fax : +63(088) 567-0382  
E-mail : [info@steagstatepower.com](mailto:info@steagstatepower.com)  
URL : [www.steag.de](http://www.steag.de)

<b>Project Scheme</b>	:	Build-Operate-Transfer (BOT) over a 25-year cooperation period with the National Power Corporation
<b>Location</b>	:	PHIVIDEC Industrial Estate, San Martin-Balacanas, Villanueva, Misamis Oriental
<b>Area Covered</b>	:	55.42 hectares
<b>Project Component</b>	:	2 units of 105MW (net) Coal-Fired Thermal Units; Six-kilometer 138kV Transmission Line; Five-kilometer Underground Raw Water Pipeline
<b>Project Cost</b>	:	US \$ 305 million

#### Key Power Plant Facilities

- ✦ Boilers for Steam Generation
- ✦ Turbines and Generators
- ✦ Air Cleaning System comprising Flu Gas Desulfurization and Bag Filters
- ✦ 150-meter Stack with an on-line Continuous Emission Monitoring System (CEMS)
- ✦ Cooling Water System and Condensers
- ✦ Water Treatment Facilities
- ✦ Coal Handling Plant
- ✦ Administration Building
- ✦ Fire Fighting Station
- ✦ 138kV Transmission Line
- ✦ Raw Water River Intake and Pipeline